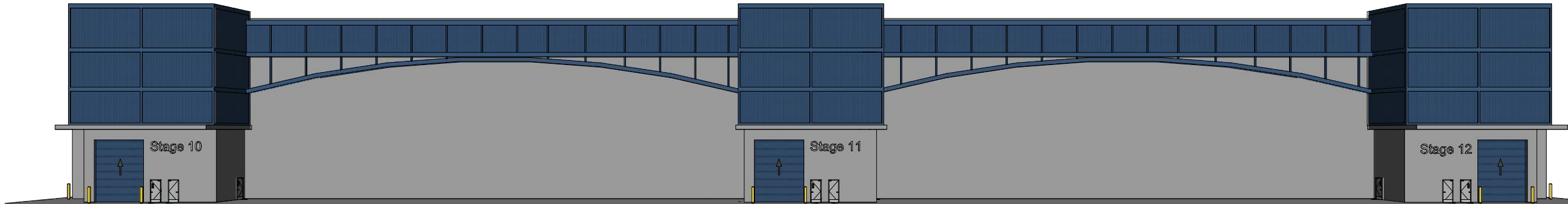
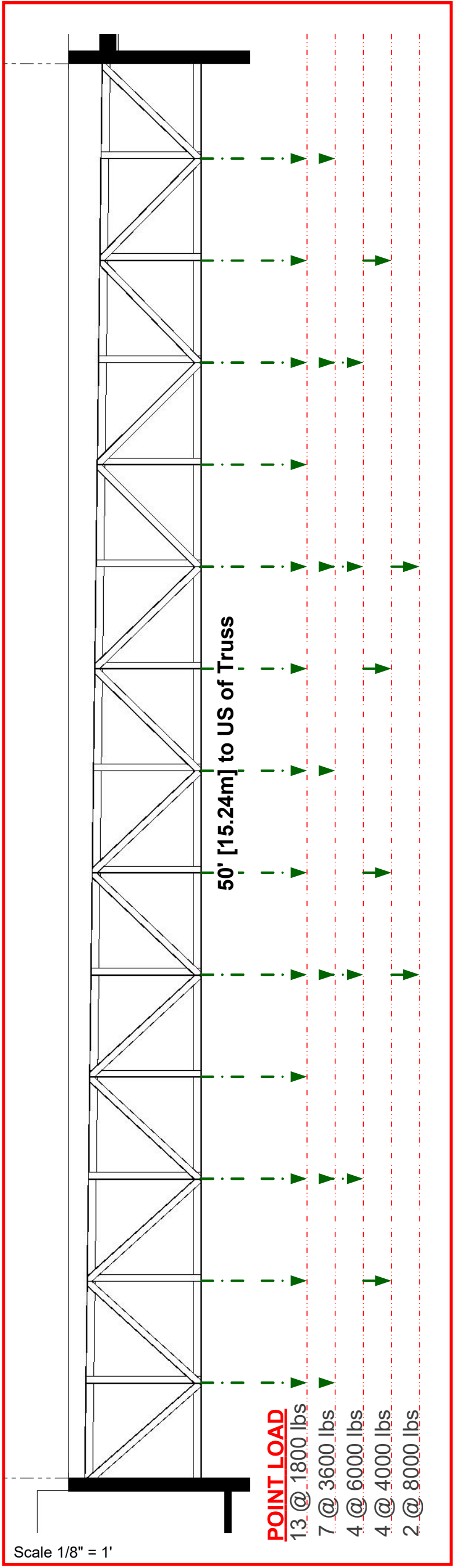
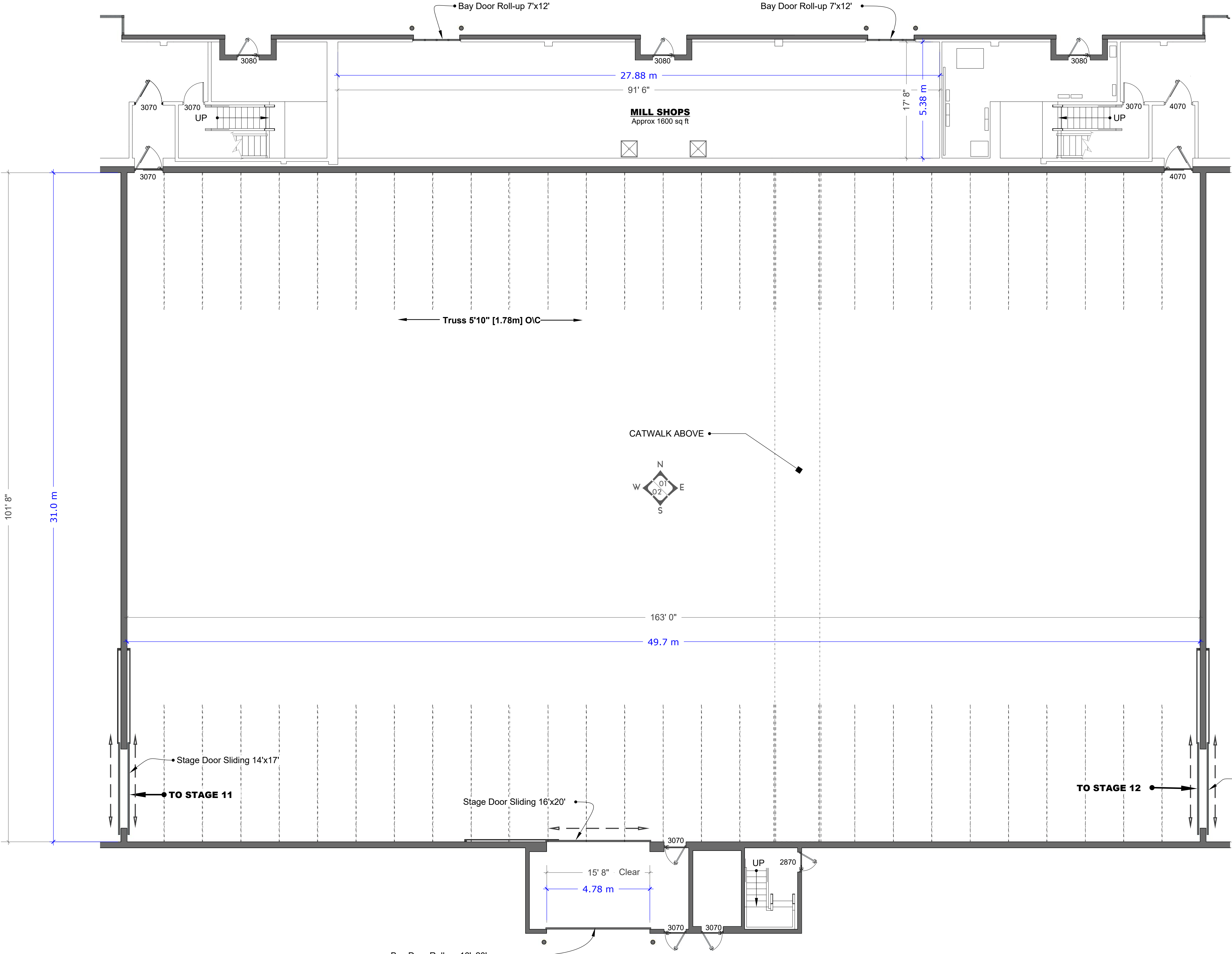


North face

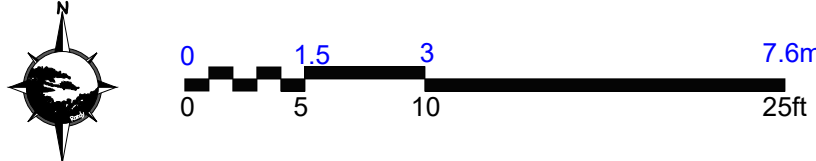


South face



POINT LOAD TABLE

S12 STAGE 12 - PLAN  
scale: 1/8" = 1' [1:96]



2400 BOUNDARY ROAD  
BURNABY B.C. V5M3Z3  
CANADA

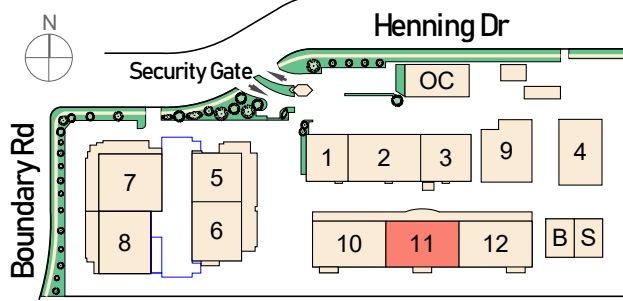
T: 604.482.2000  
F: 604.482.2007

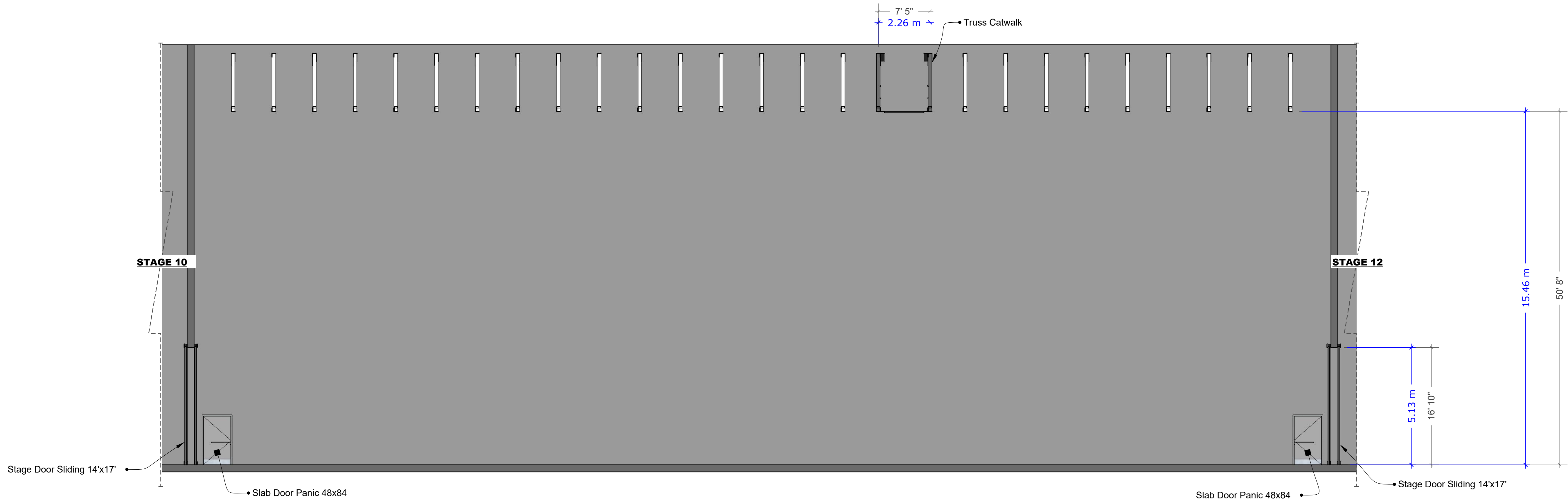
**SOUND STAGE: 11**

**FEATURES**

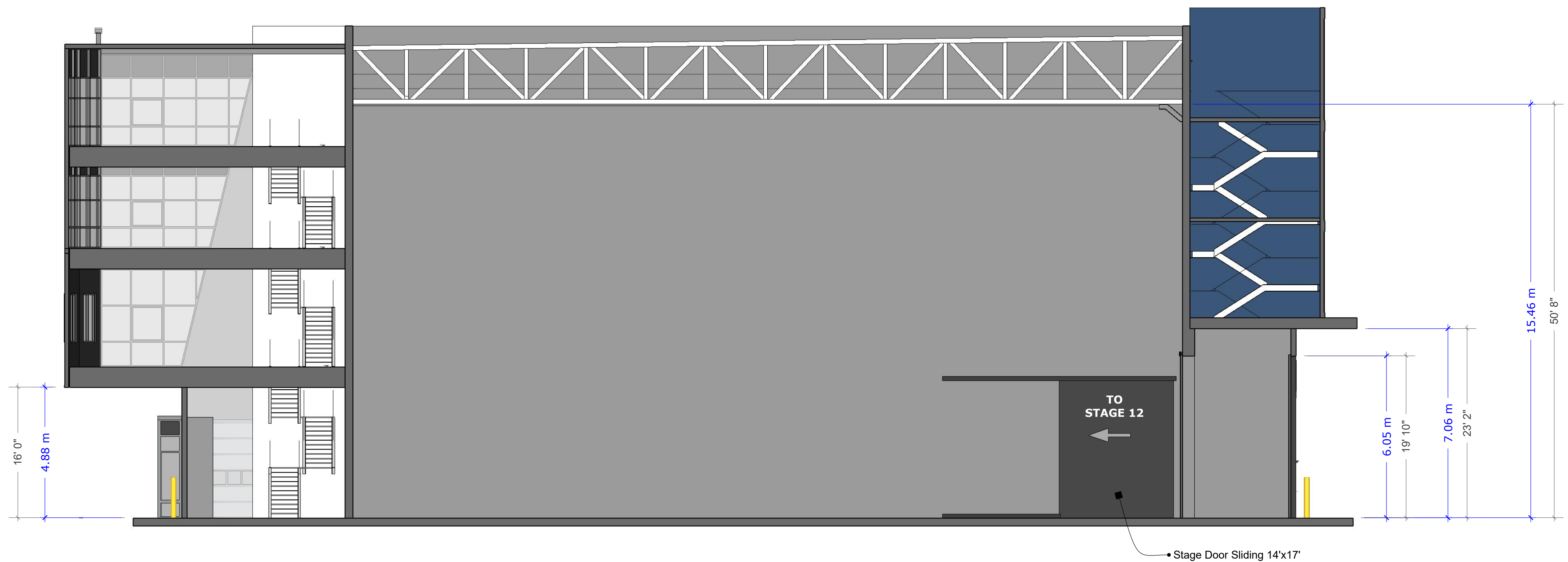
- 17,000 sq. ft.
- SOUNDPROOF - Interior has full acoustical paneling
- 16' LOADING DOORS
- 1600 amps 120/208V 3 phase 4 wire available
- 50' to underside of trusses
- 35,000cfm exhaust fans
- HVAC to sound stage has 40 ton capacity
- Automatic demand controlled ventilation provided by CO2 sensors for energy savings & variable frequency drive

**SITE LEGEND**





**N** ELEV NORTH  
scale: 1/8" = 1' [1:24]



**E** ELEV EAST  
scale: 1/8" = 1' [1:24]



2400 BOUNDARY ROAD  
BURNABY B.C. V5M3Z3  
CANADA

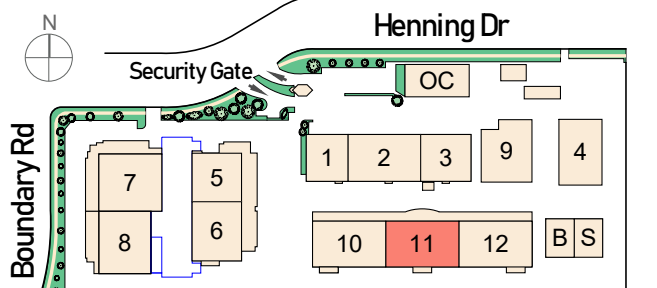
T: 604.482.2000  
F: 604.482.2007

**SOUND STAGE: 11**

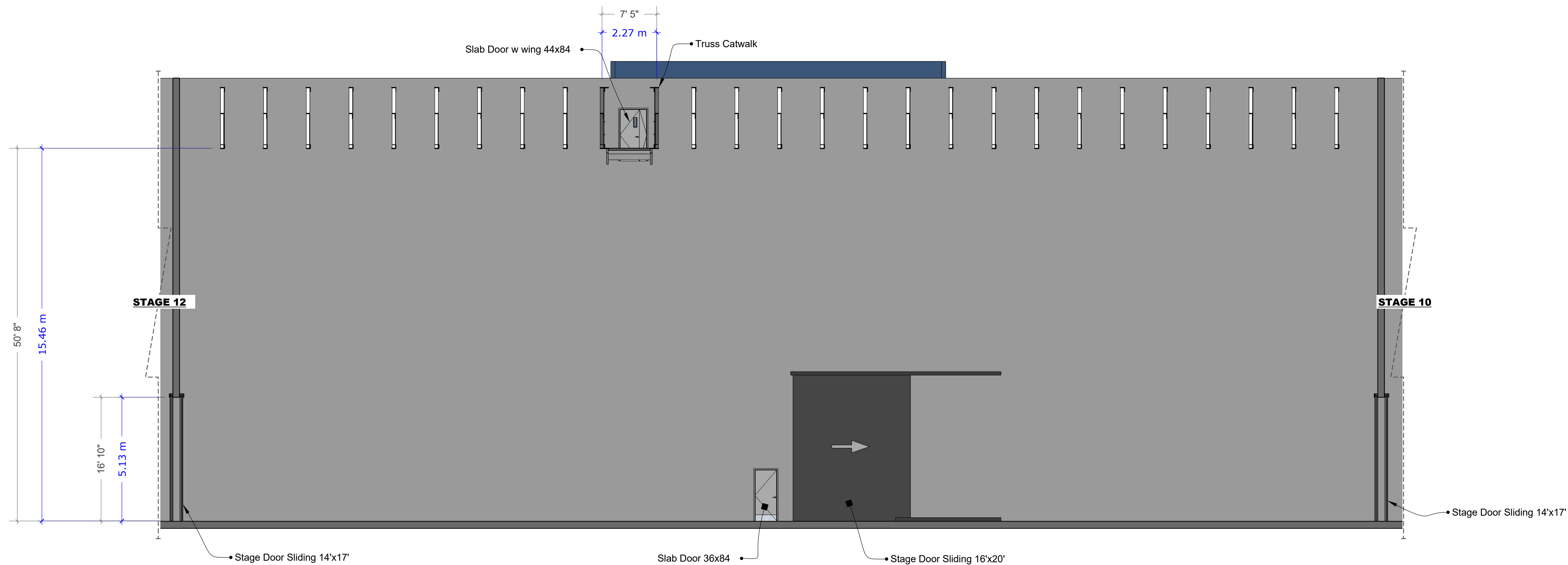
#### FEATURES

- 17,000 sq. ft.
- SOUNDPROOF - Interior has full acoustical paneling
- 16' LOADING DOORS
- 1600 amps 120/208V 3 phase 4 wire available
- 50' to underside of trusses
- 35,000cfm exhaust fans
- HVAC to sound stage has 40 ton capacity
- Automatic demand controlled ventilation provided by CO2 sensors for energy savings & variable frequency drive

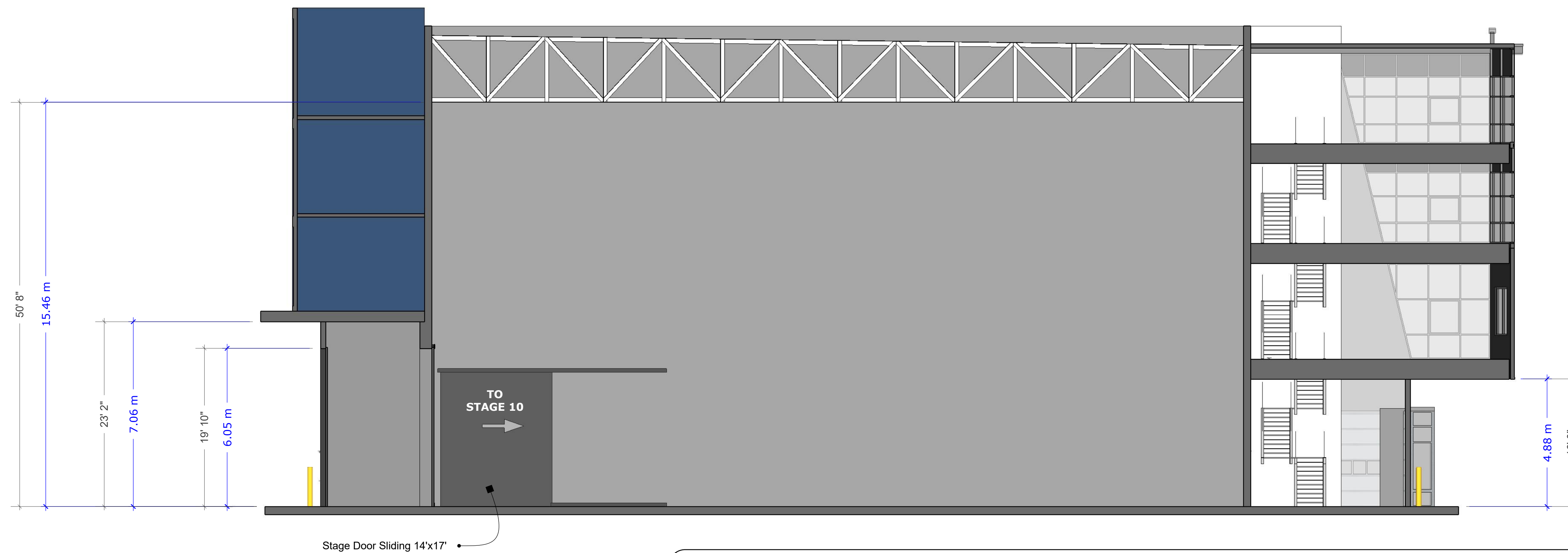
#### SITE LEGEND







**S** ELEV SOUTH  
scale: 1/8" = 1' [1:96]



**W** ELEV WEST  
scale: 1/8" = 1' [1:96]



2400 BOUNDARY ROAD  
BURNABY B.C. V5M3Z3  
CANADA

T: 604.482.2000  
F: 604.482.2007

**SOUND STAGE: 11**

#### FEATURES

- 17,000 sq. ft.
- SOUNDPROOF - Interior has full acoustical paneling
- 16' LOADING DOORS
- 1600 amps 120/208V 3 phase 4 wire available
- 50' to underside of trusses
- 35,000cfm exhaust fans
- HVAC to sound stage has 40 ton capacity
- Automatic demand controlled ventilation provided by CO2 sensors for energy savings & variable frequency drive

#### SITE LEGEND

