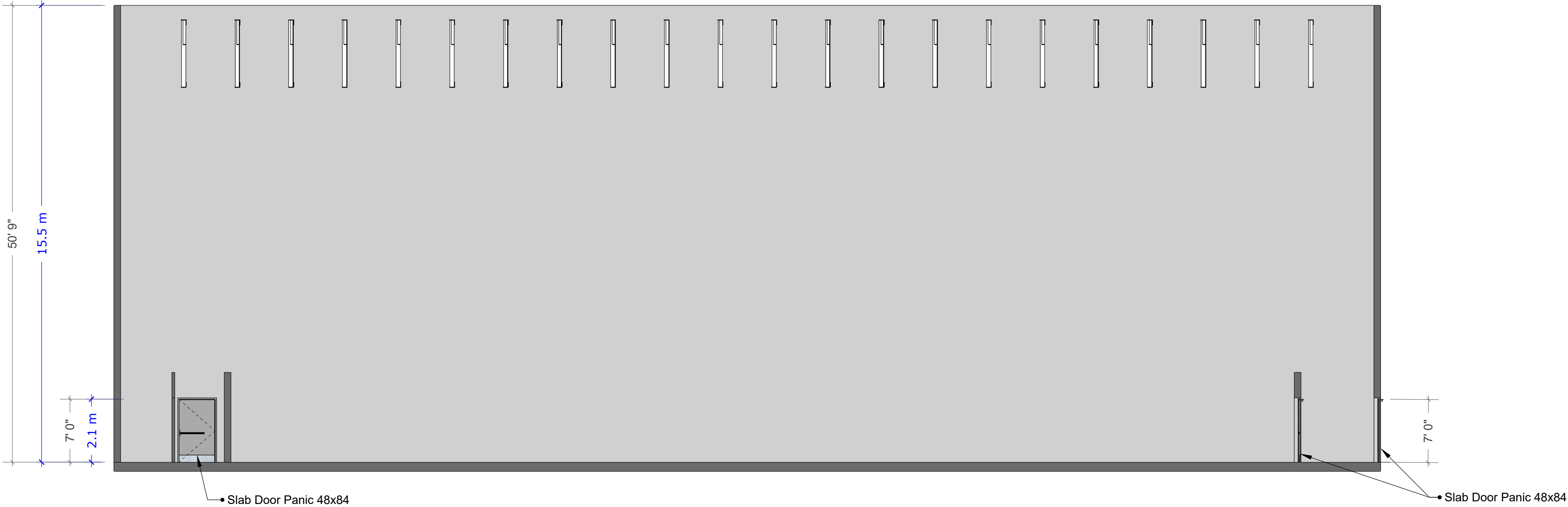


**N** ELEVATION NORTH  
scale: 1/8" = 1' [1:96]



**E** ELEVATION EAST  
scale: 1/8" = 1' [1:96]

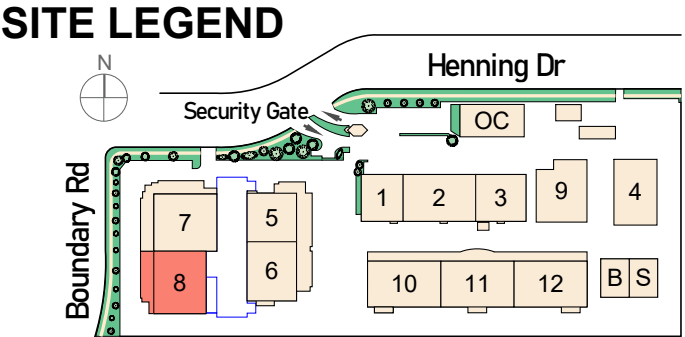


2400 BOUNDARY ROAD  
BURNABY B.C. V5M3Z3  
CANADA

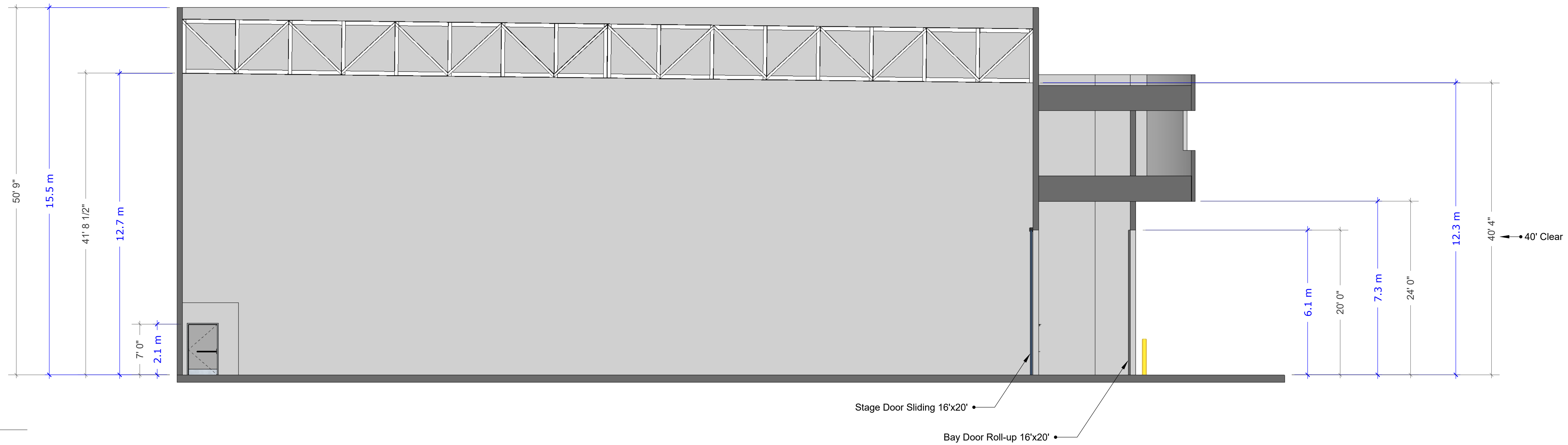
T: 604.482.2000  
F: 604.482.2007

**SOUND STAGE:** **8**

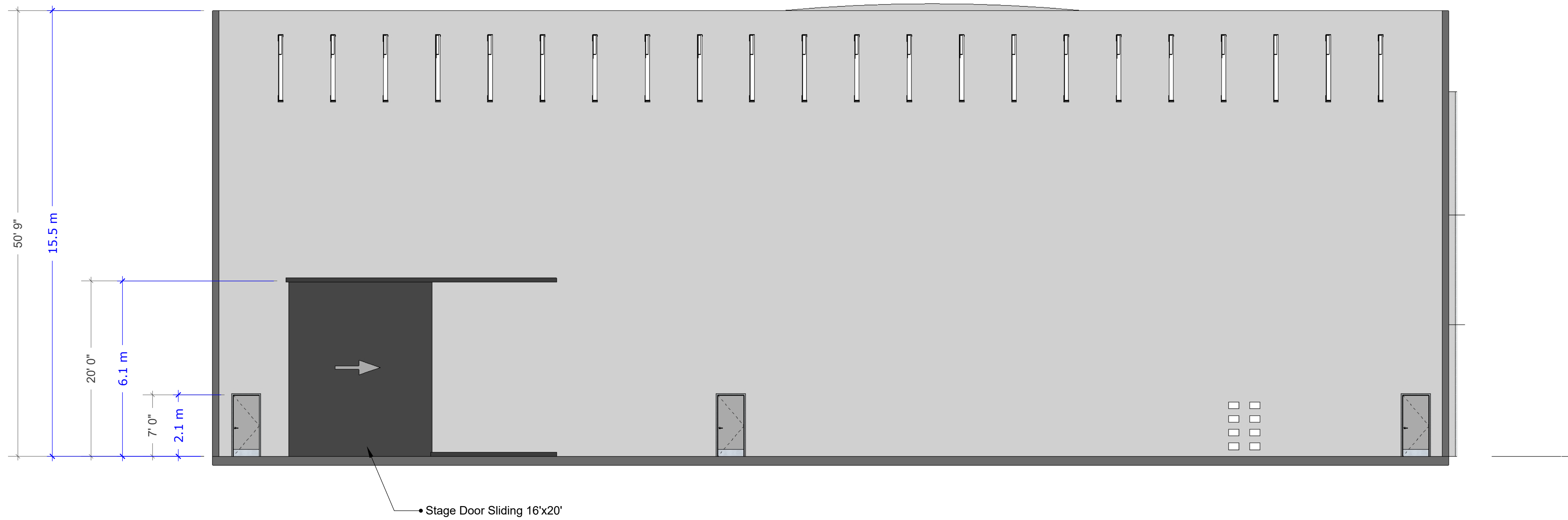
- FEATURES**
- 16,500 sq. ft.
  - SOUNDPROOF - Interior has full acoustical paneling
  - 16' x 20' LOADING DOORS
  - 1600 amps 120/208V 3 phase 4 wire available
  - 40' clear to underside of truss
  - 35,000cfm exhaust fans
  - HVAC to sound stage has 40 ton capacity
  - Automatic demand controlled ventilation provided by CO2 sensors for energy savings & variable frequency drive







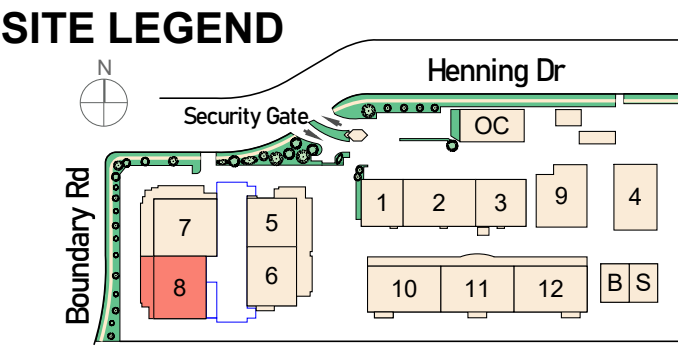
S ELEVATION SOUTH  
scale: 1/8" = 1' [1:96]



W ELEVATION WEST  
scale: 1/8" = 1' [1:96]

PV WEST ELEVATION

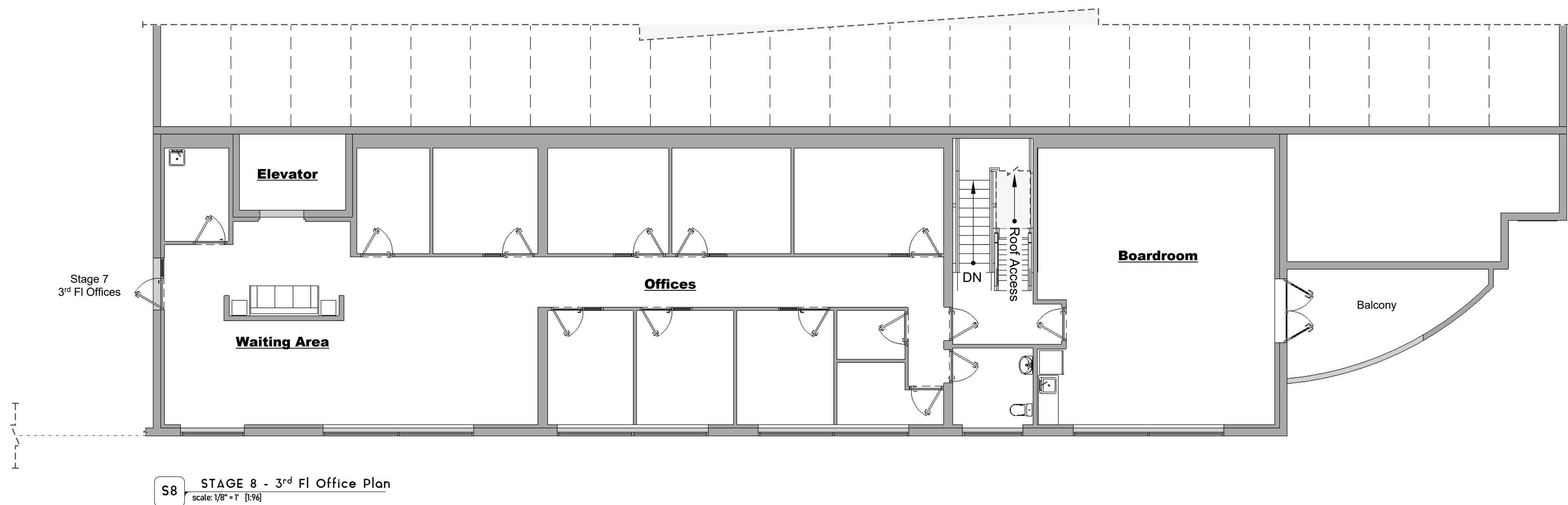
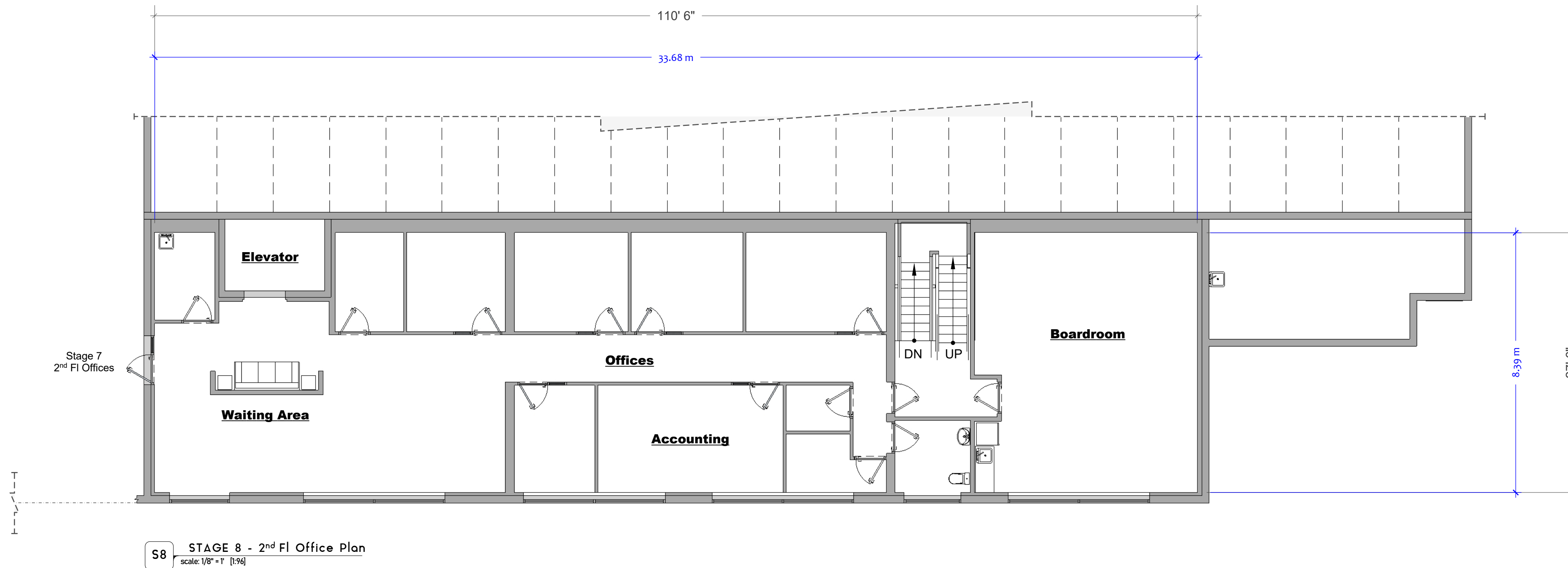
- FEATURES**
- \*16,500 sq. ft.
  - \*SOUNDPROOF - Interior has full acoustical paneling
  - \*16' x 20' LOADING DOORS
  - \*1600 amps 120/208V 3 phase 4 wire available
  - \*40' clear to underside of truss
  - \*35,000cfm exhaust fans
  - \*HVAC to sound stage has 40 ton capacity
  - \*Automatic demand controlled ventilation provided by CO2 sensors for energy savings & variable frequency drive



2400 BOUNDARY ROAD  
BURNABY B.C. V5M3Z3  
CANADA

T: 604.482.2000  
F: 604.482.2007

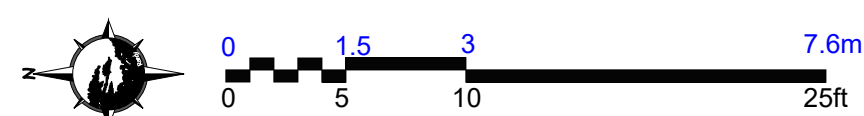
**SOUND STAGE: 8**



**WEST ELEVATION**



**PV WEST ELEVATION**



2400 BOUNDARY ROAD  
BURNABY B.C. V5M3Z3  
CANADA

T: 604.482.2000  
F: 604.482.2007

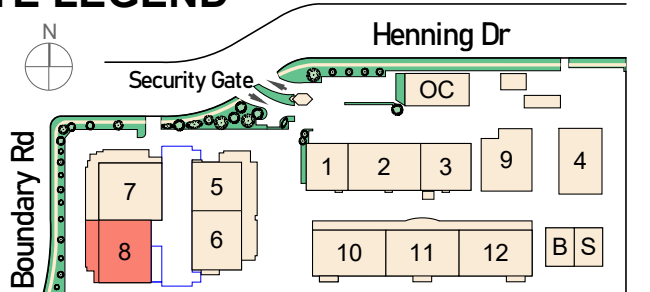
**SOUND STAGE:**

**8**

**FEATURES**

- 16,500 sq. ft.
- SOUNDPROOF - Interior has full acoustical paneling
- 16' x 20' LOADING DOORS
- 1600 amps 120/208V 3 phase 4 wire available
- 40' clear to underside of truss
- 35,000cfm exhaust fans
- HVAC to sound stage has 40 ton capacity
- Automatic demand controlled ventilation provided by CO2 sensors for energy savings & variable frequency drive

**SITE LEGEND**



To Scale when Printed on Arch D [ 36x24] paper