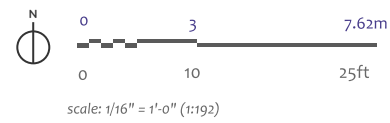
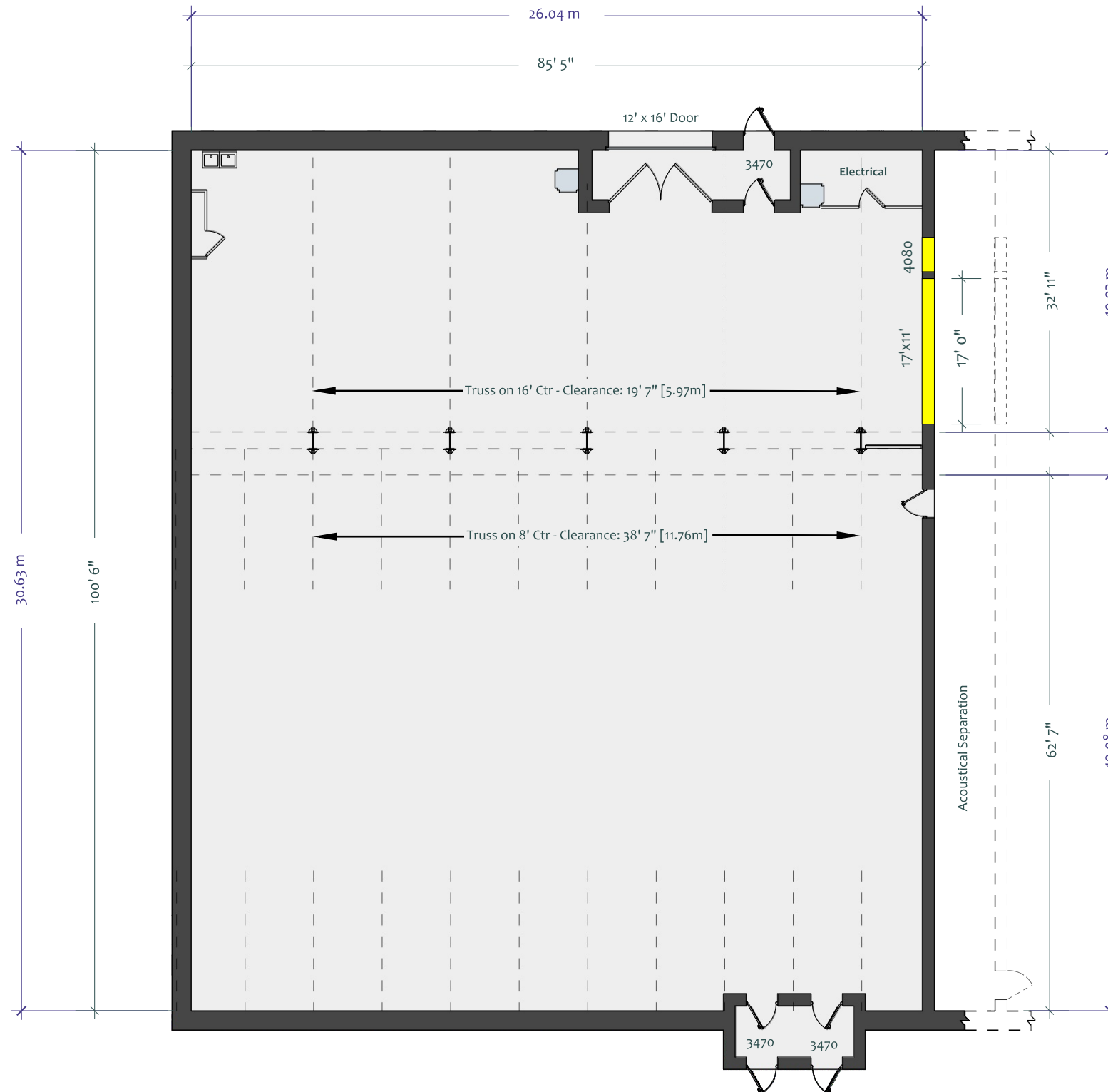
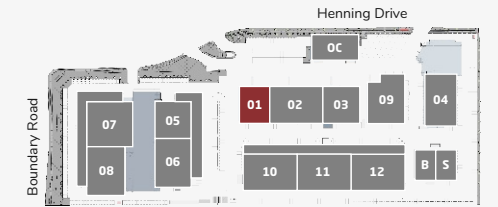


Stage 1

Main Floor



Site Legend



Features

- 8,500sf [790ms]
- Soundproof
- Elephant Doors
- 1800amps 120/208v
- GRID = 7,500 Total Lbs./Truss
- Reverb. Time = 1 sec @ 500hz
- Air conditioned

Optional Removable Wall Sections

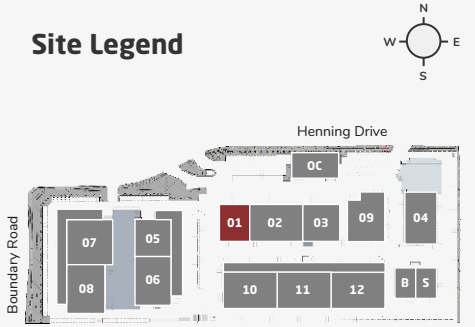
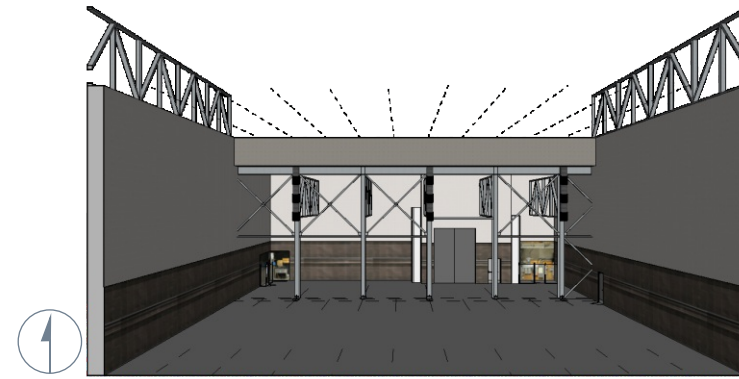
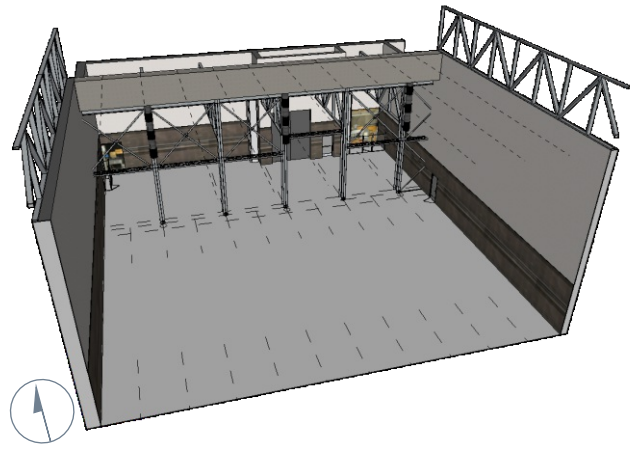


info@bridgestudios.com

1-604-482-2000

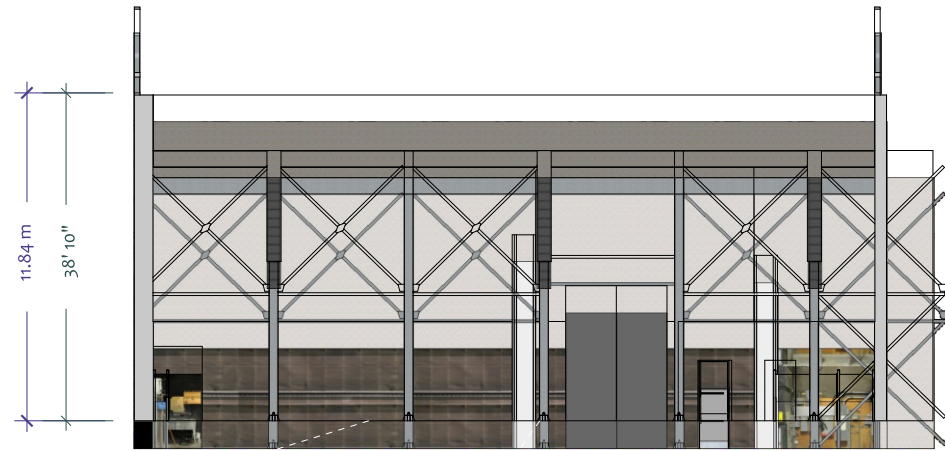
Part of the Bridge Studios Group

Stage 1 Elevations



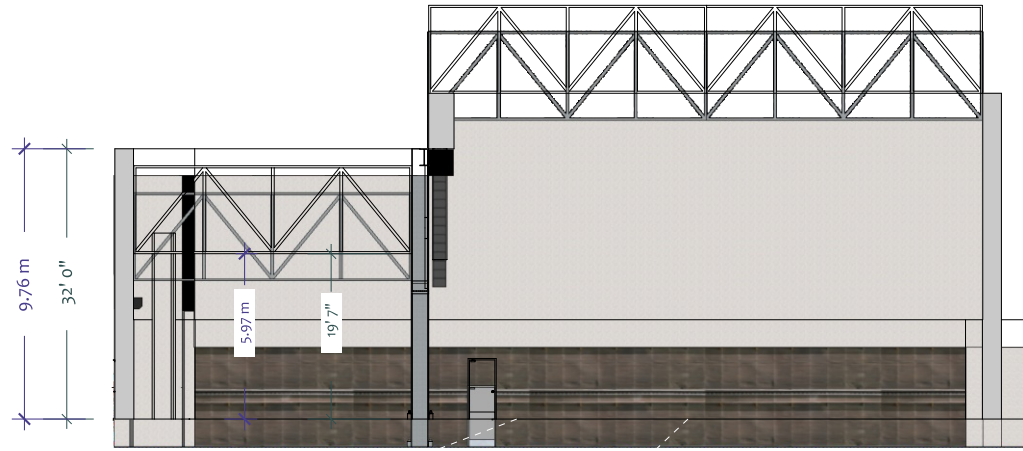
Features

- 8,500sf [790ms]
- Soundproof
- Elephant Doors
- 1800amps 120/208v
- GRID = 7,500 Total Lbs./Truss
- Reverb. Time = 1 sec @ 500hz
- Air conditioned



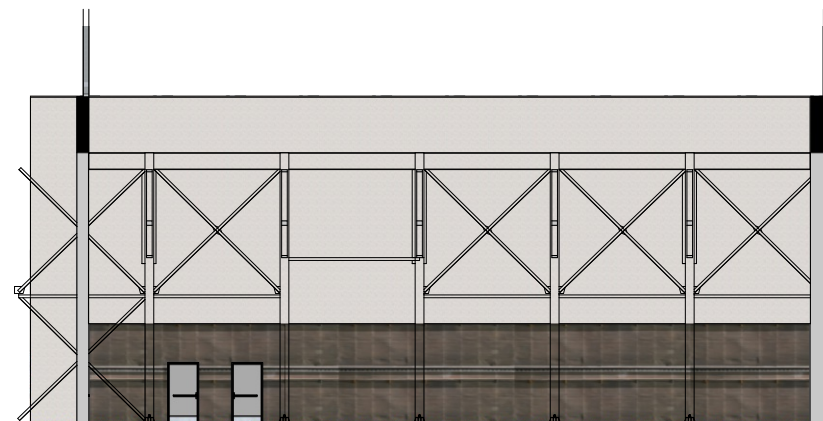
1

North Wall
scale: 1" = 20' (1:240)



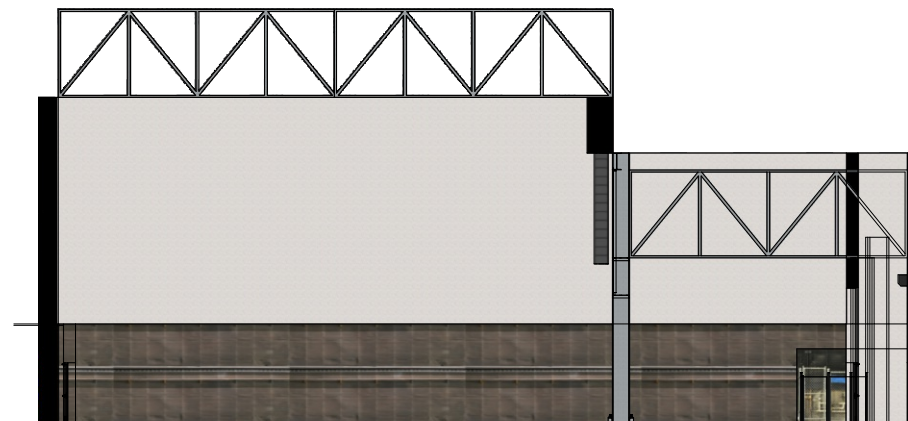
2

East Wall
scale: 1" = 20' (1:240)



3

South Wall
scale: 1" = 20' (1:240)



4

West Wall
scale: 1" = 20' (1:240)



info@bridgestudios.com

1-604-482-2000