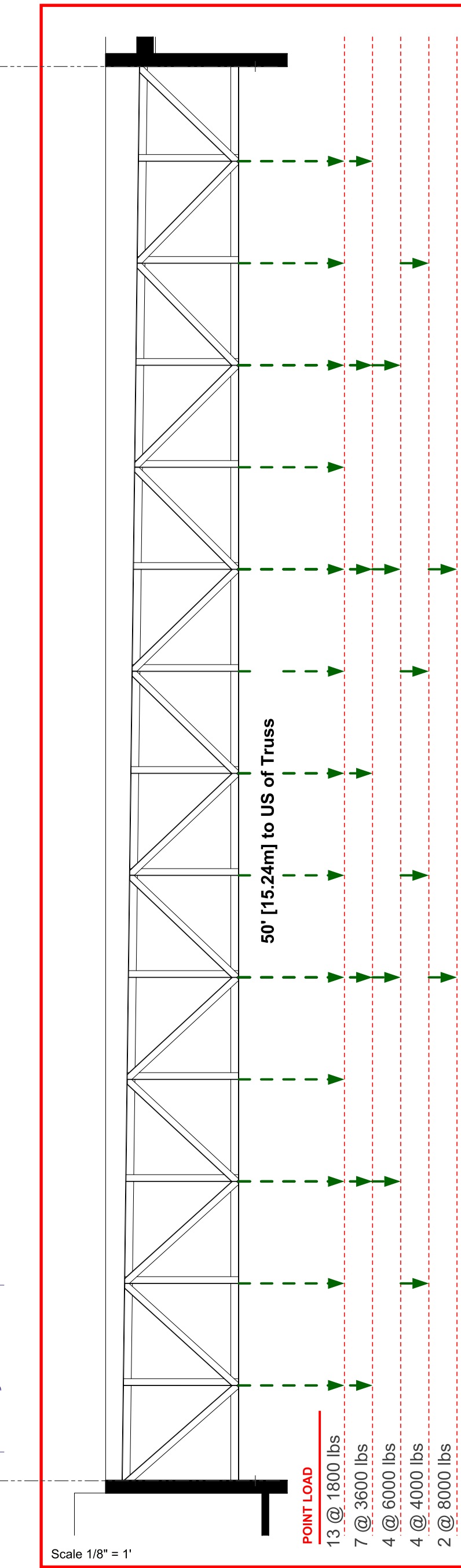
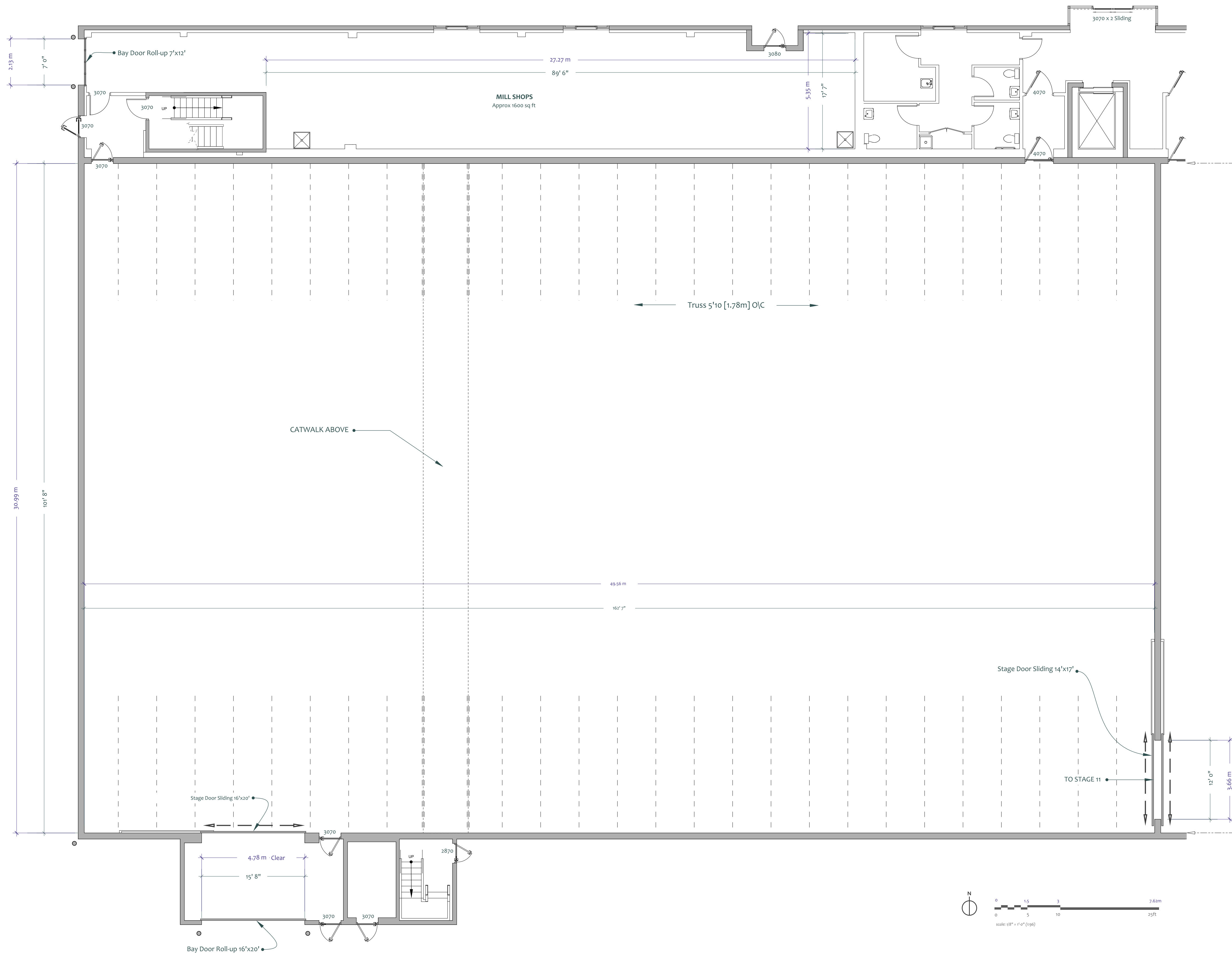
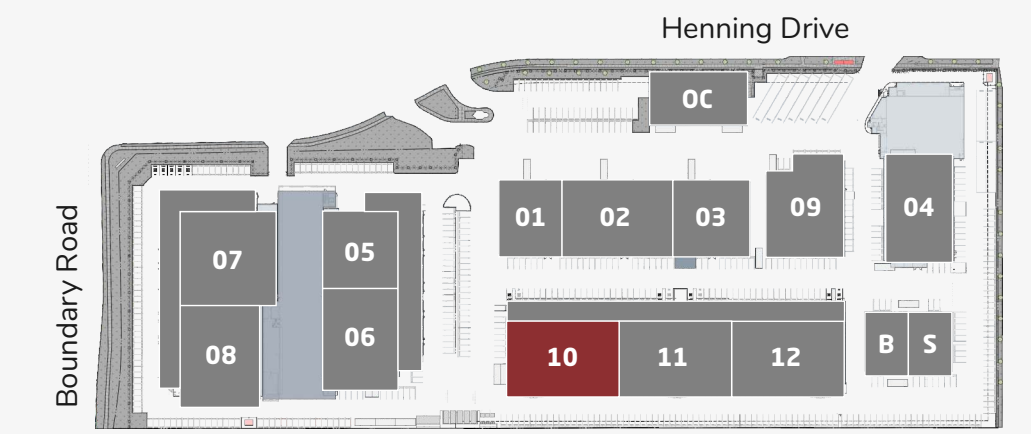
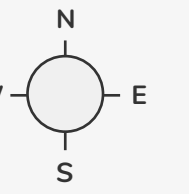


Stage 10

Main Floor



Site Legend



Features

- 17,000sf [1,580ms]
- SOUNDPROOF - Interior has full acoustical paneling
- 16' x 20' LOADING DOORS
- 1600 amps 120/208V 3 phase 4 wire available
- 50' clear to underside of truss
- 35,000cfm exhaust fans
- HVAC to sound stage has 40 ton capacity
- Automatic demand controlled ventilation provided by CO2 sensors for energy savings & variable frequency drive



info@bridgestudios.com

1-604-482-2000

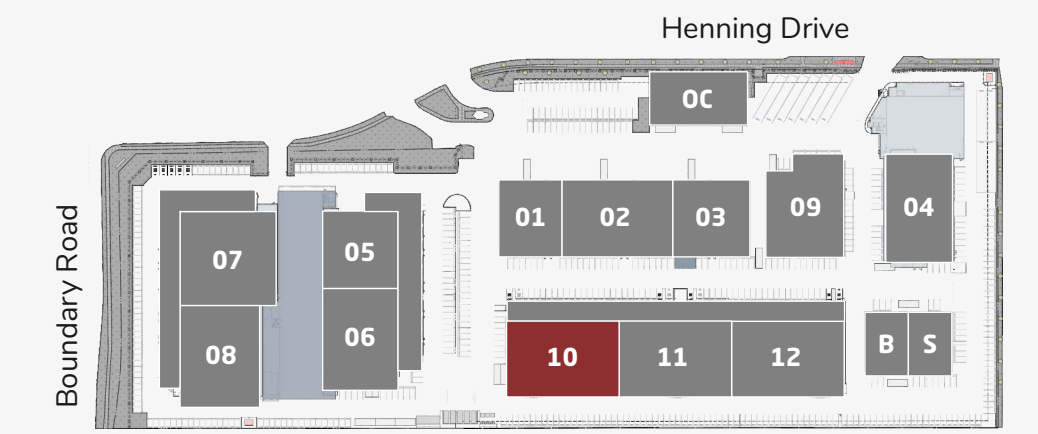
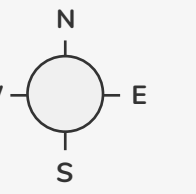
Part of the Bridge Studios Group

Stage 10

North & East Elevations

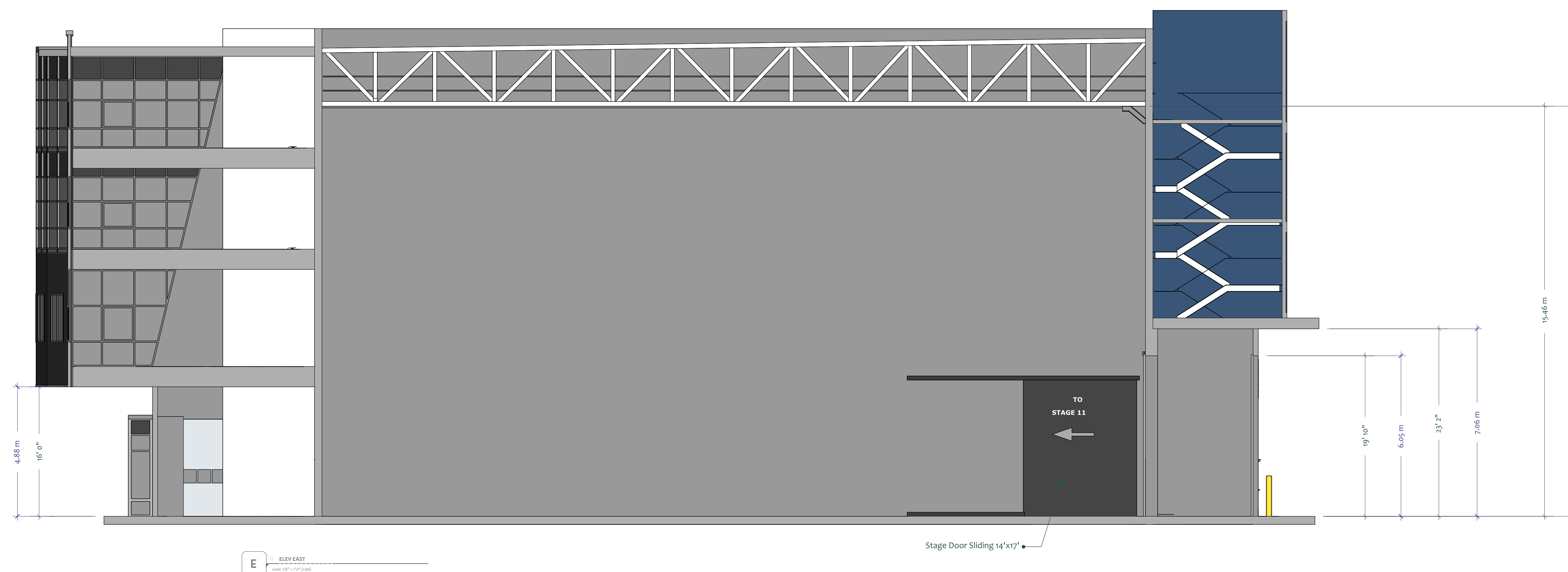
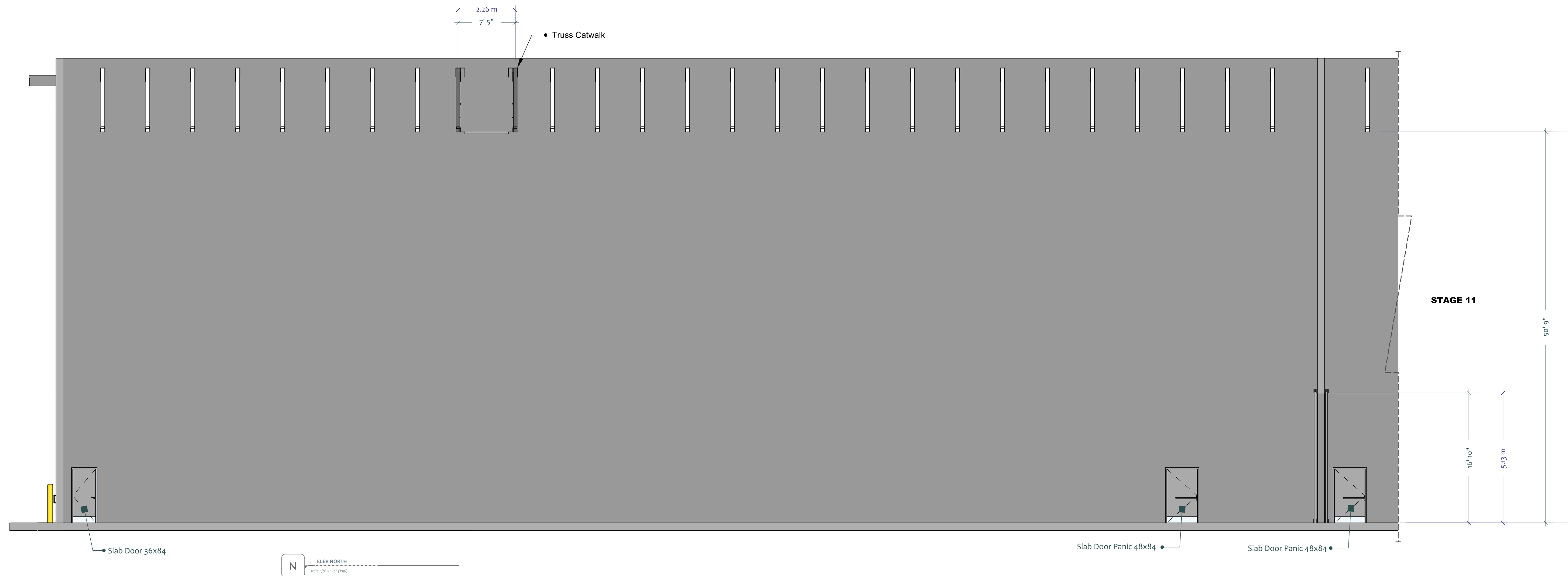


Site Legend



Features

- 17,000sf [1,580ms]
- SOUNDPROOF - Interior has full acoustical paneling
- 16' x 20' LOADING DOORS
- 1600 amps 120/208V 3 phase 4 wire available
- 50' clear to underside of truss
- 35,000cfm exhaust fans
- HVAC to sound stage has 40 ton capacity
- Automatic demand controlled ventilation provided by CO2 sensors for energy savings & variable frequency drive



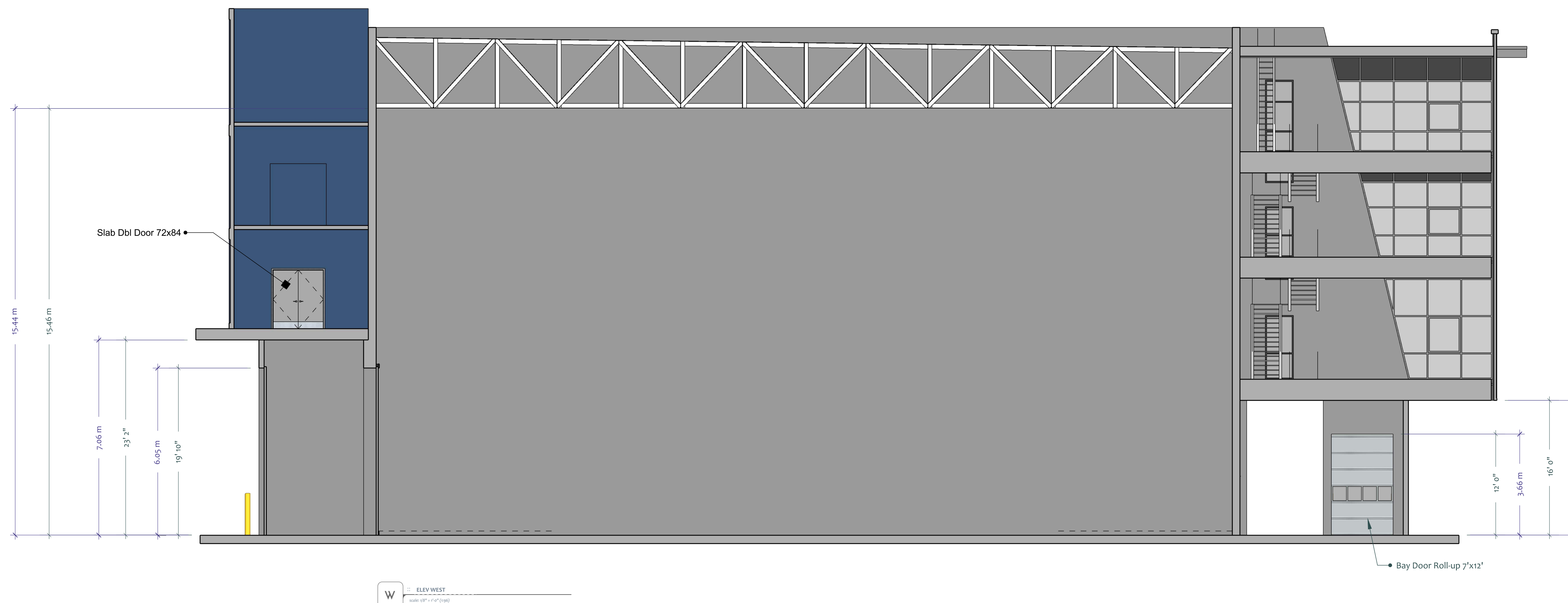
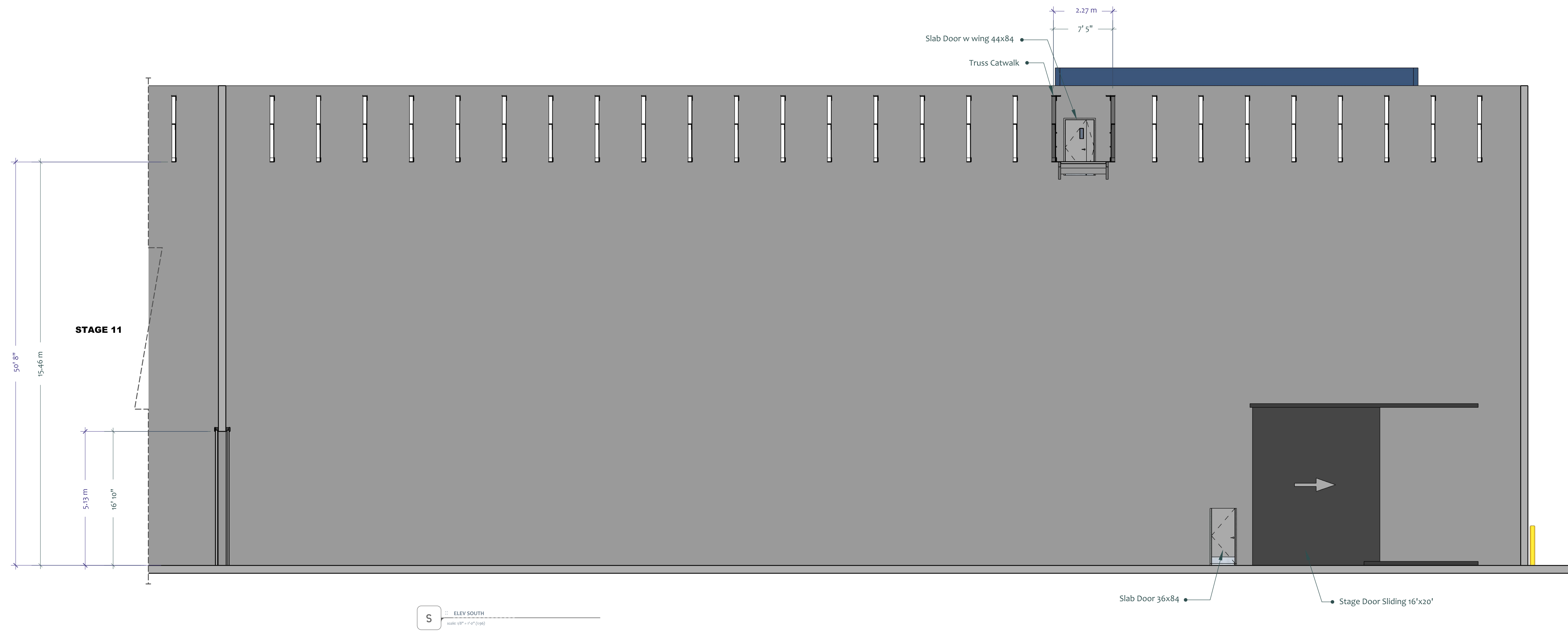
info@bridgestudios.com

1-604-482-2000

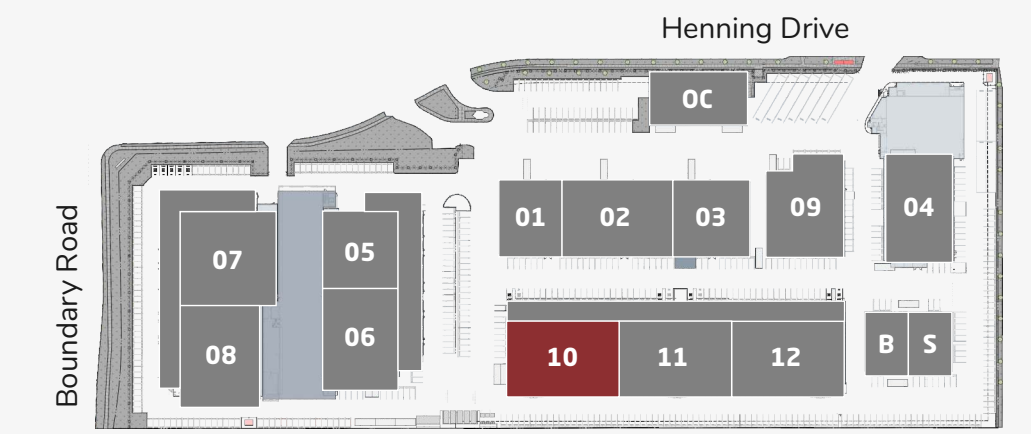
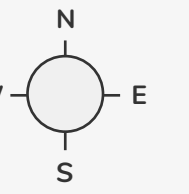
Part of the Bridge Studios Group

Stage 10

South & West Elevations



Site Legend



Features

- 17,000sf [1,580ms]
- SOUNDPROOF - Interior has full acoustical paneling
- 16' x 20' LOADING DOORS
- 1600 amps 120/208V 3 phase 4 wire available
- 50' clear to underside of truss
- 35,000cfm exhaust fans
- HVAC to sound stage has 40 ton capacity
- Automatic demand controlled ventilation provided by CO2 sensors for energy savings & variable frequency drive



info@bridgestudios.com

1-604-482-2000

Part of the Bridge Studios Group