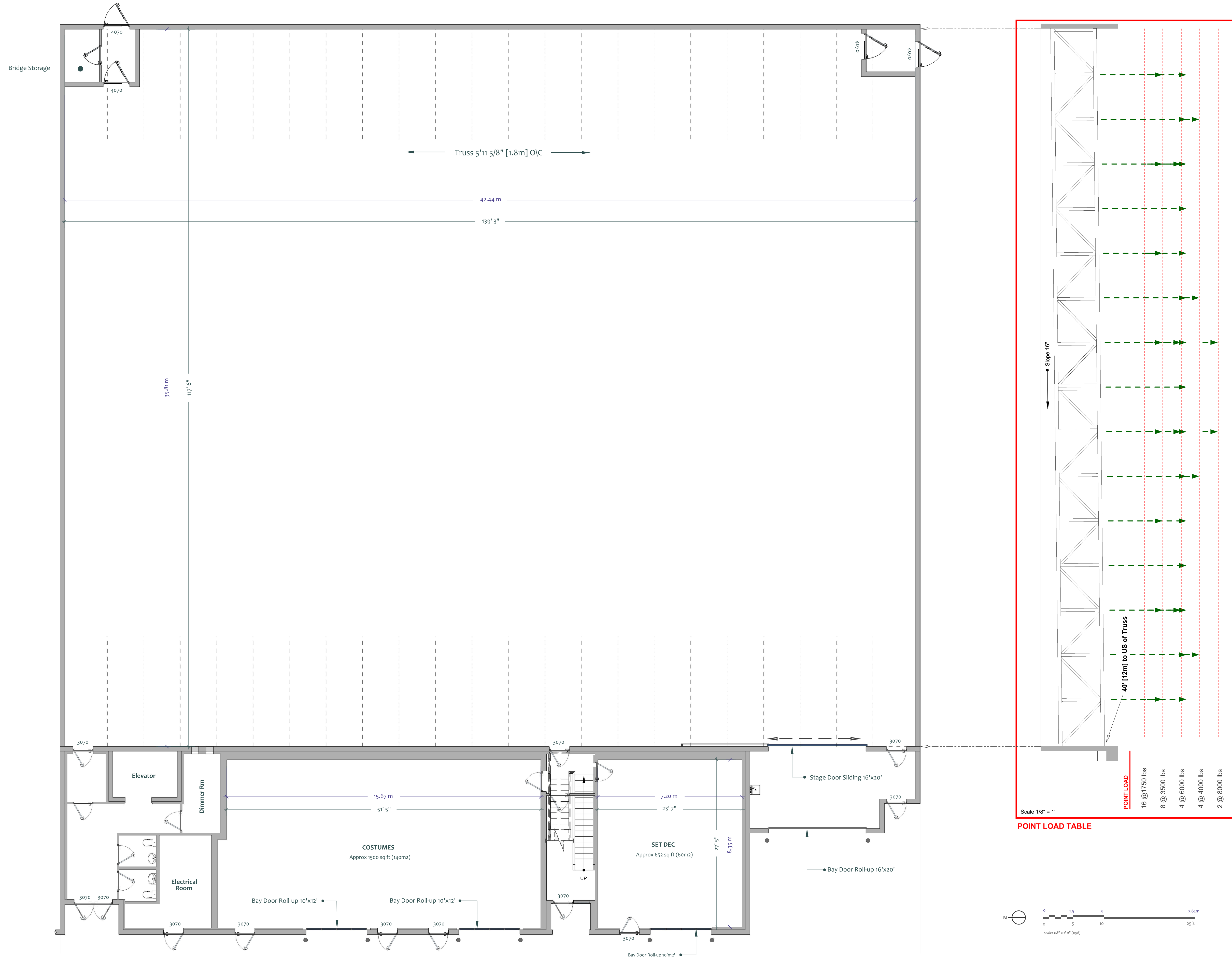
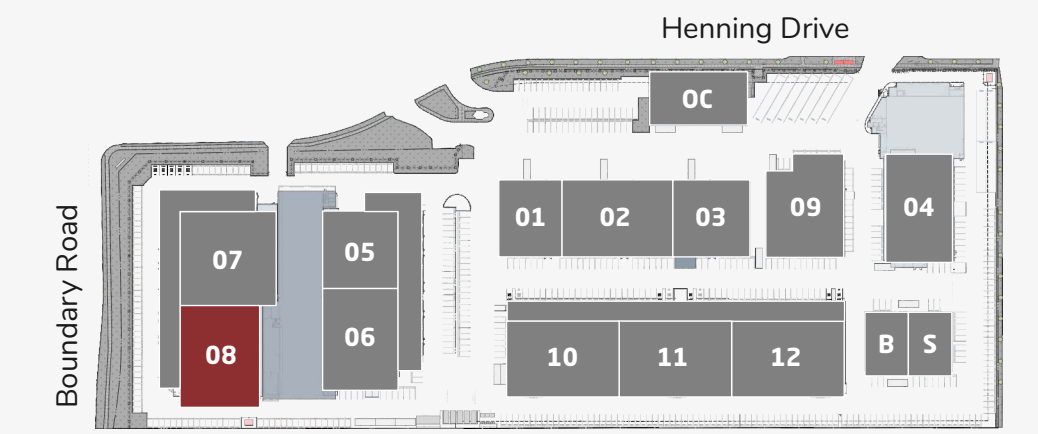
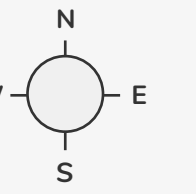


# Stage 8

## Main Floor



### Site Legend



### Features

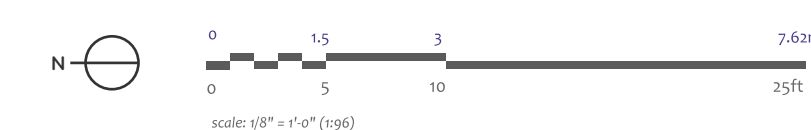
- 16,500sf [1,530ms]
- SOUNDPROOF - Interior has full acoustical paneling
- 16' x 20' LOADING DOORS
- 1600 amps 120/208V 3 phase 4 wire available
- 40' clear to underside of truss
- 35,000cfm exhaust fans
- HVAC to sound stage has 40 ton capacity
- Automatic demand controlled ventilation provided by CO2 sensors for energy savings & variable frequency drive



[info@bridgestudios.com](mailto:info@bridgestudios.com)

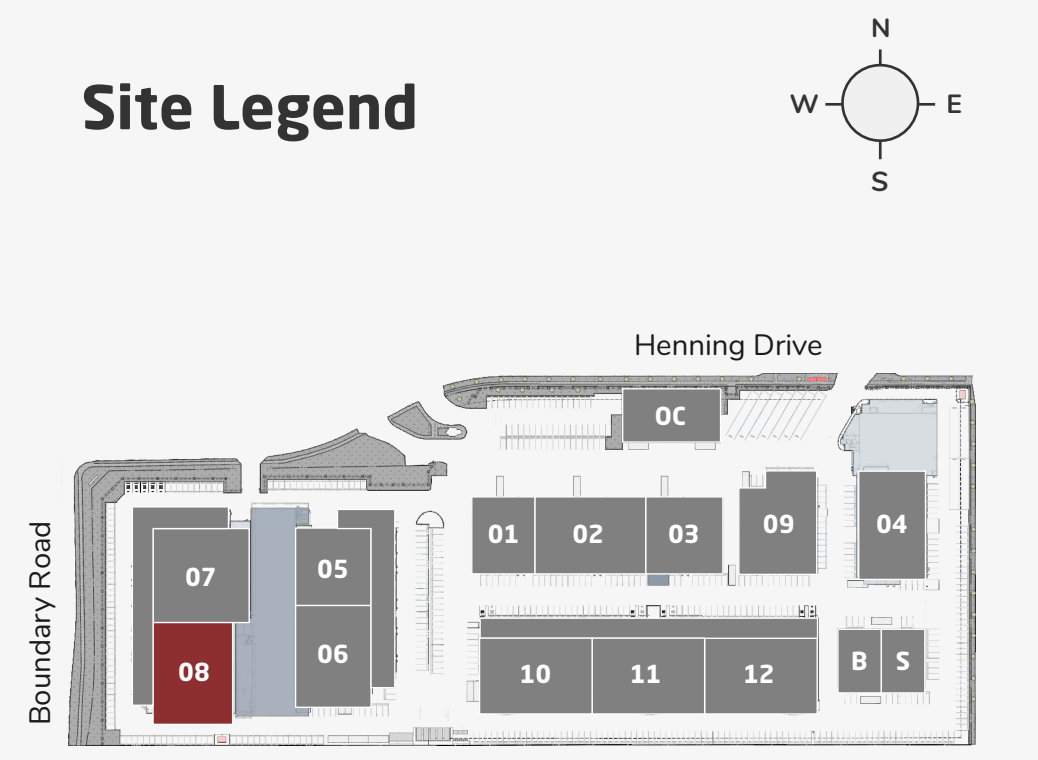
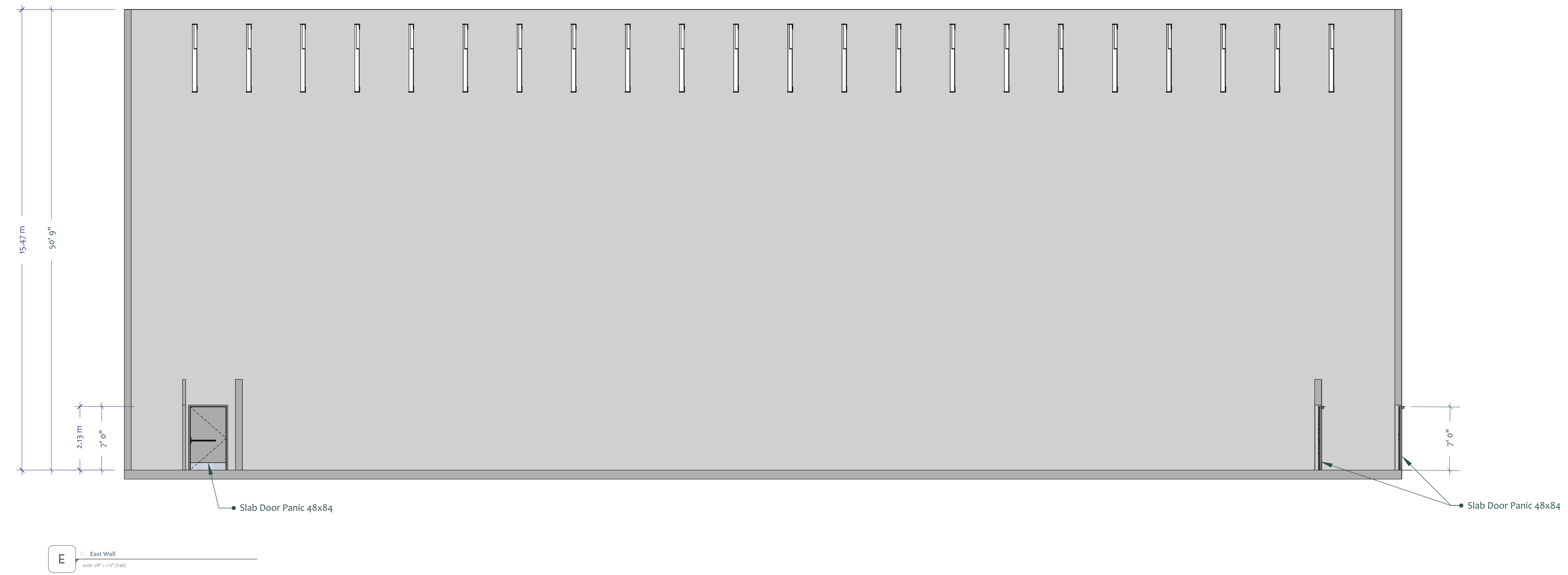
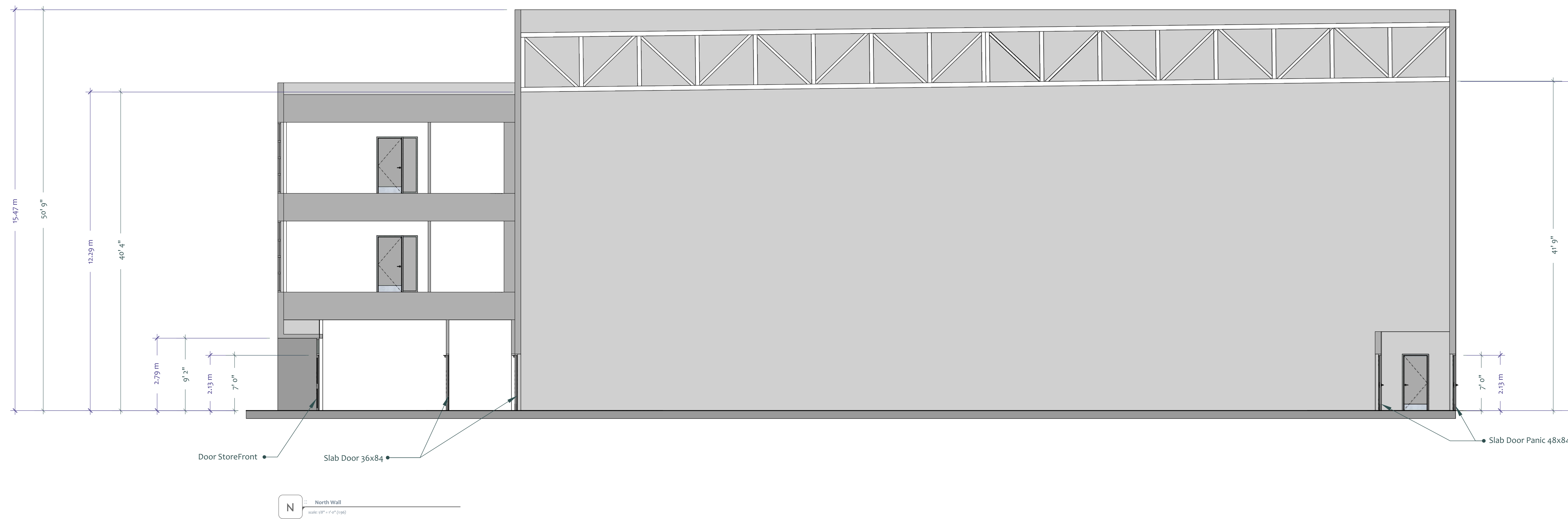
1-604-482-2000

Part of the Bridge Studios Group



# Stage 8

## North & East Elevations



### Features

- 16,500sf [1,530ms]
- SOUNDPROOF - Interior has full acoustical paneling
- 16' x 20' LOADING DOORS
- 1600 amps 120/208V 3 phase 4 wire available
- 40' clear to underside of truss
- 35,000cfm exhaust fans
- HVAC to sound stage has 40 ton capacity
- Automatic demand controlled ventilation provided by CO2 sensors for energy savings & variable frequency drive



info@bridgestudios.com  
1-604-482-2000

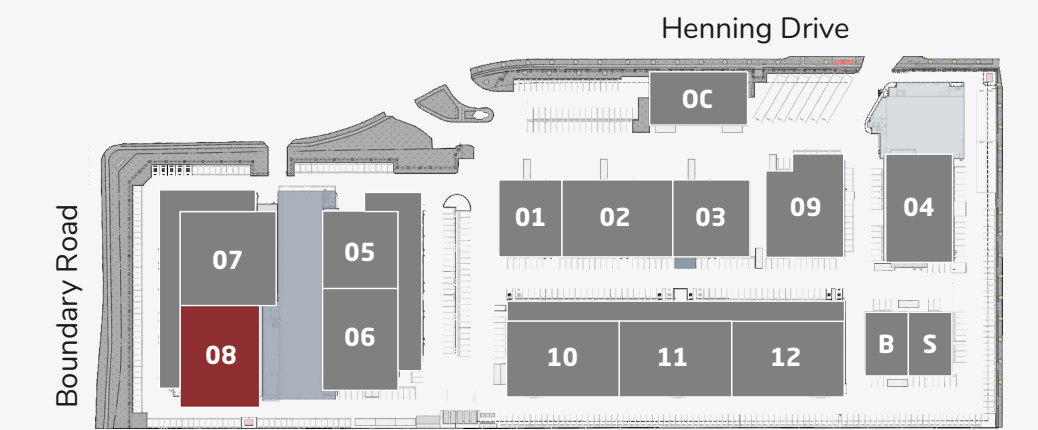
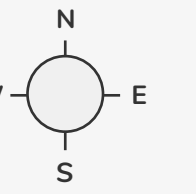
Part of the Bridge Studios Group

# Stage 8

## South & West Elevations

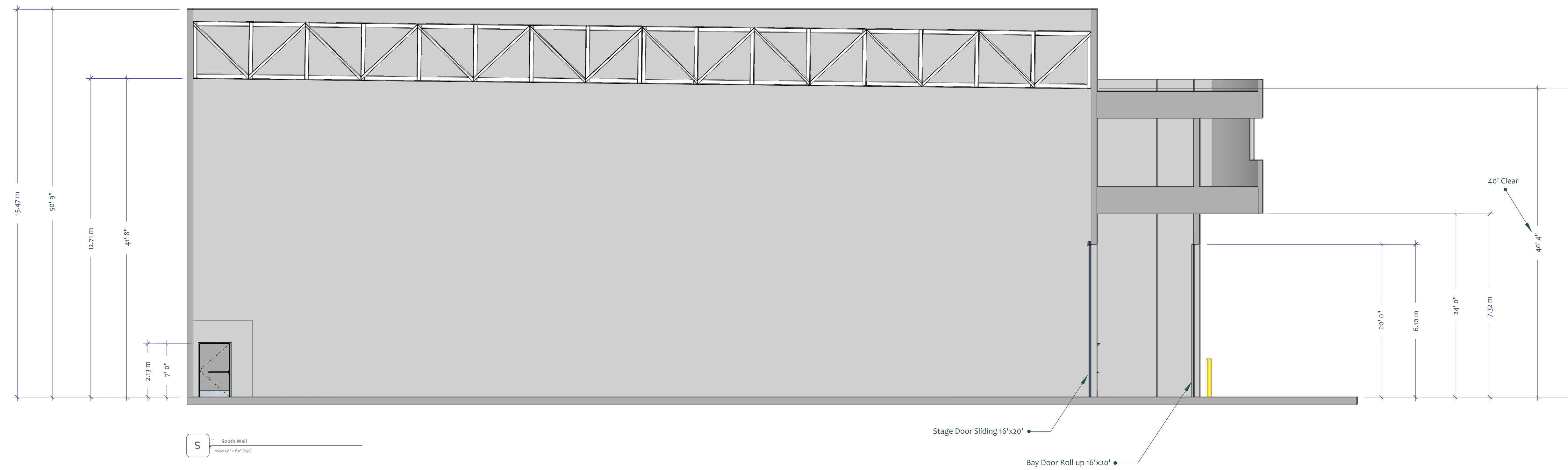


### Site Legend

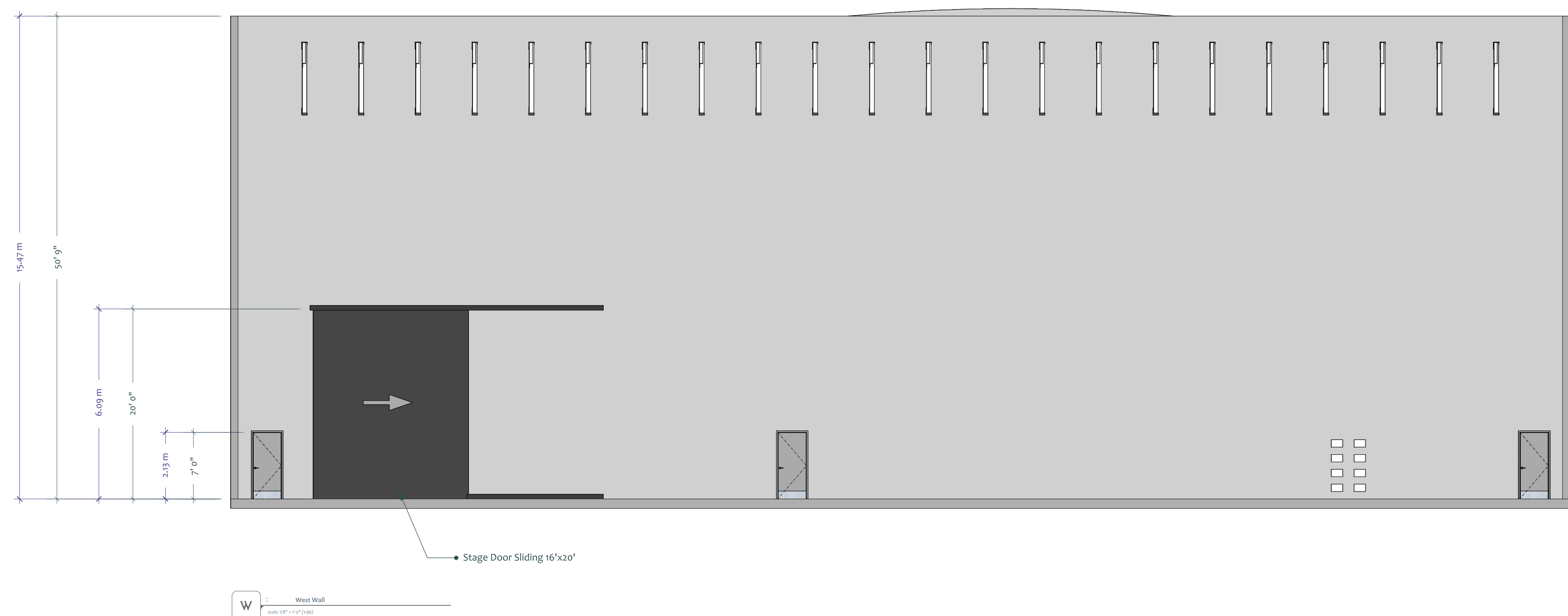


### Features

- 16,500sf [1,530ms]
- SOUNDPROOF - Interior has full acoustical paneling
- 16' x 20' LOADING DOORS
- 1600 amps 120/208V 3 phase 4 wire available
- 40' clear to underside of truss
- 35,000cfm exhaust fans
- HVAC to sound stage has 40 ton capacity
- Automatic demand controlled ventilation provided by CO2 sensors for energy savings & variable frequency drive



S South Wall  
www.boundary.com



W West Wall  
www.boundary.com



[info@bridgestudios.com](mailto:info@bridgestudios.com)

1-604-482-2000

Part of the Bridge Studios Group